

**NEM**

NEM-HYDRAULICS.COM

Cartridges





# Hydraulic Cartridges

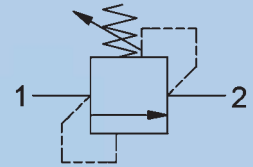
Pressure control valves, counterbalance valves, directional valves, check valves, flow control valves, logic elements, and bodies.

## Pressure relief valves

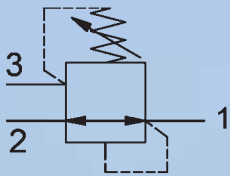


Configuration: Standard, Back pressure compensated, Heavy-Duty

Cavities: **SAE8, SAE10, SAE12**  
 Nominal flow:  
**1.5 ÷ 100 l/min**  
 Max working pressure range:  
**350 ÷ 450 bar**



## Pressure reducing valves



Configuration: direct and direct with stabilizer device

Cavities: **SAE8, SAE10**  
 Nominal flow:  
**2 ÷ 30 l/min**  
 Pressure output range:  
**5 ÷ 165 bar**

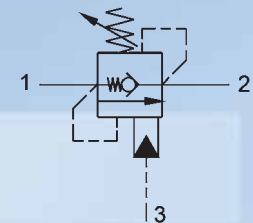


## Counterbalance valves

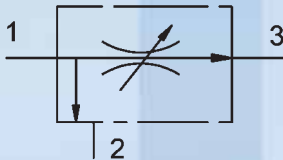


Configuration: Standard, fully compensated, relief compensated

Cavities: **SAE8, SAE12**  
 Nominal flow:  
**30 ÷ 100 l/min**  
 Max working pressure range:  
**350 ÷ 450 bar**



## Flow control valves



2 and 3 way flow control  
 Flow Divider/combiner  
 Unidirectional flow control  
 Logic element 2/2 NA, 2/2 NC, 3/2 priority

Cavities: **SAE8, SAE10, SAE12, SAE16**  
 Max working pressure:  
**350 bar**



## Directional valves

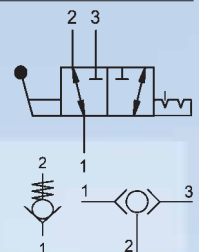


Manual controlled 2/2, 3/2 - Hydraulic piloted 3/2

Cavities: **SAE10**  
 Nominal flow: **30 ÷ 50 l/min**  
 Max working pressure: **350 bar**

Check valves, Shuttle valves, Check valvesli

Cavities: **SAE8, SAE10, SAE20**  
 Max working pressure: **350 bar**





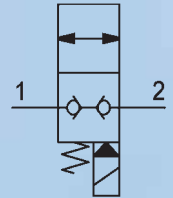
# Electric Cartridges

On-Off directional valves and proportional valves for directional control, pressure and flow. Bodies and coils.

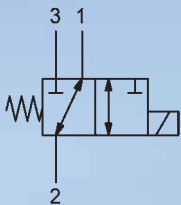
## Directional Valves On-Off



2 ways poppet/spool type  
 Cavities:  
**SAE8, SAE10, SAE12, SAE16**  
 Max working pressure:  
**350 bar**



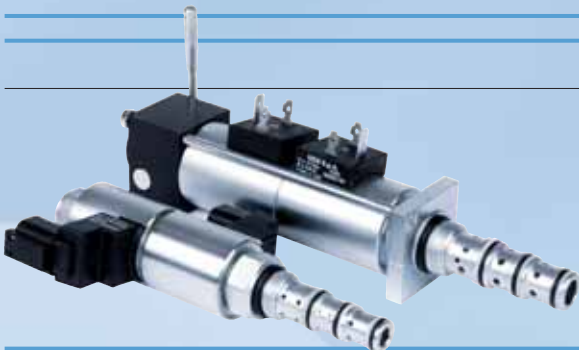
## Directional Valves On-Off



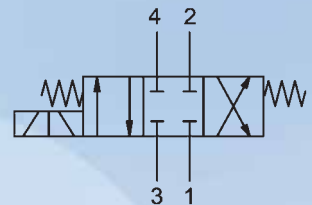
3 ways poppet/spool type  
 Cavities:  
**SAE8, SAE10, SAE12, SAE16**  
 Max working pressure:  
**350 bar**



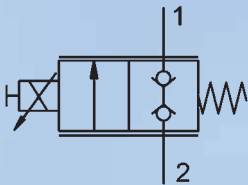
## Directional Valves On-Off



4 ways spool type  
 Cavities:  
**SAE8, SAE10, SAE12, SAE16**  
 Max working pressure:  
**350 bar**



### Proportional Directional Valves



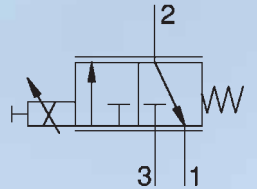
2 ways poppet/spool type  
 Cavities: **SAE8, SAE10, SAE12, SAE16**  
 Max working pressure:  
**350 bar**



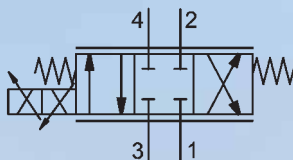
### Proportional Directional Valves



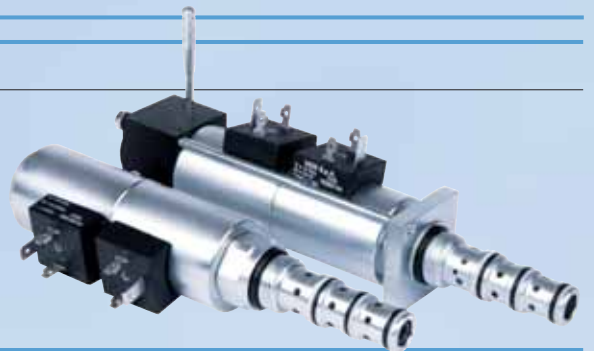
3 ways poppet/spool type  
 Cavities: **SAE8, SAE10, SAE12, SAE16**  
 Max working pressure:  
**350 bar**



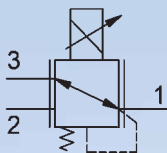
### Proportional Directional Valves



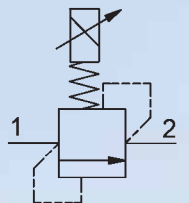
4 ways spool type  
 Cavities: **SAE8, SAE10, SAE12, SAE16**  
 Max working pressure:  
**350 bar**



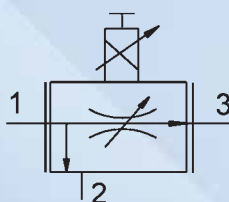
### Proportional pressure relief valves / Proportional pressure reducing valves



Cavities: **SAE8, SAE10**  
 Max working pressure:  
**5 ÷ 165 bar**



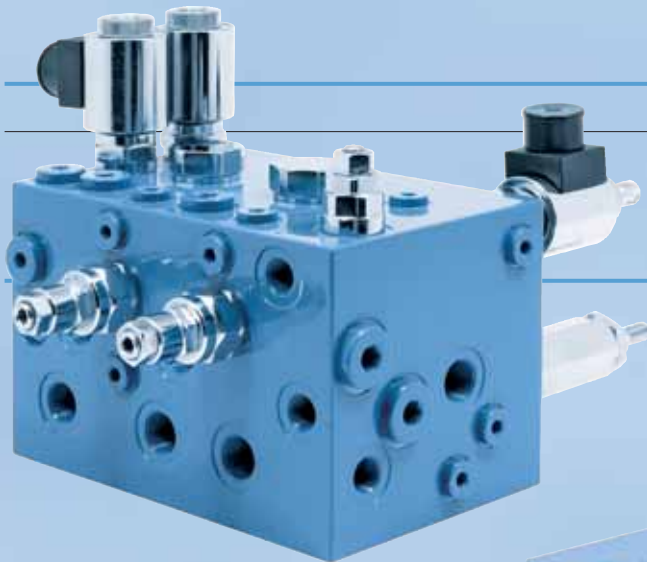
### Proportional flow control valves



2 and 3 ways flow control  
 Cavities: **SAE8, SAE12**  
 Max working pressure:  
**350 bar**  
 Flow rates:  
**30 ÷ 60 l/min**



# Hydraulic Integrated Circuits (HIC)

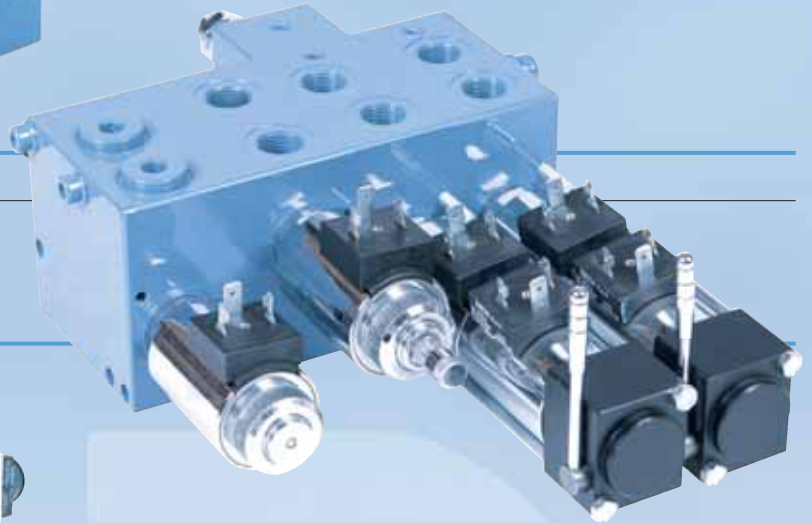


**Feeding unit for pilot lines**

**Applications:**  
Minicavators  
Wheel Loaders  
Backhoe Loaders

**Arial platform HIC**

**Applications:**  
Main boom control  
Stabilizer control  
Hydrostatic transmission control



**Agricultural Equipment HIC**

**Applications:**  
Harvesting machines  
Self-propelled sprayers  
Lifting devices

**Road maintenance HIC**

**Applications:**  
Salt sprayers  
Sweepers



## Quickness, flexibility and creative designing

**Nem** is one of the emerging companies of the past few years and imposed itself for its unique “creative designing”, which characterizes each field of its activities. The “creative designing” is made possible by the support from the company management and by a workplace which is free from old cultural constraints and from old organization models, this is vital for an organization that aims at being quick, dynamic and innovative. The managers of **Nem** are not only looking for ideas and solutions aimed at improving and developing high quality products, they are also working everyday in order to maintain a young and conscious workplace, made up of skilled and motivated staff, which is given the possibility to express itself and to experiment its ideas, and which is expected to aim at product and system innovation. This approach characterized the values of the management culture of the company and at the same time enabled **Nem** to base the company development on two other key factors for success: flexibility (in planning and production) and the ability to react quickly. Hence the choice, at a strategic level, to keep a company dimension whose goal is flexibility, and to identify an organization structure characterized by clear roles, tasks and jobs. Only in this way and thanks to the high level skills of the personnel is the company able to guarantee prototyping and production start-up within a very short time, also for small batches. The market is looking more and more for specific, customized and high-technology products, and **Nem** developed a high level competence and the ability to react quickly which, together with high quality and efficiency, enabled it to become one of the emerging companies of the sector.